

TOURIST ACCOMMODATION, AUSTRALIA, DECEMBER QUARTER 1994

MAIN FEATURES

DECEMBER QUARTER 1994
COMPARED WITH
DECEMBER QUARTER 1993

HOTELS, MOTELS AND GUEST HOUSES

- Rooms available increased slightly overall to 166,963 although New South Wales, Victoria and South Australia recorded small decreases.
- Room nights occupied increased by 6.4 per cent to 9.1 million overall with increases in all States/Territories, including 15.4 per cent in Northern Territory, 10.3 per cent in Victoria, 6.9 per cent in Western Australia and 6.7 per cent in New South Wales.
- The room occupancy rate overall rose from 55.5 per cent to 59.0 per cent, with five star and four star rated establishments recording increases of 7.4 percentage points and 5.7 percentage points respectively.
- Guest nights increased by 5.6 per cent to 15.9 million and the bed occupancy rate increased from 34.2 per cent to 35.8 per cent.
- Guest arrivals increased by 5.3 per cent to 7.8 million while average length of stay remained at 2.0 days overall, ranging from 2.4 days for Queensland and Western Australia to 1.7 days for Tasmania. By star rating, average length of stay ranged from 2.4 days for four star to 1.7 days for two star establishments.
- Takings from accommodation increased by 12.3 per cent from \$709.5m to \$796.9m while average takings per room night occupied increased overall from \$83 to \$88, ranging from \$94 for Queensland to \$74 for Tasmania.
- Employment (full-time and part-time) increased by 2.6 per cent from 102,578 persons to 105,232 persons.

HOLIDAY FLATS, UNITS AND HOUSES

- The number of units, etc. available for short-term letting increased by 5.8 per cent to 37,534 while unit nights occupied increased by 9.1 per cent to 1.8 million.
- The unit occupancy rate increased from 51.1 per cent to 52.6 per cent.
- Unit lettings increased by 13.1 per cent to 0.35 million but average length of stay fell slightly from 5.3 days to 5.1 days.
- Accommodation takings increased by 17.2 per cent from \$102.7m to \$120.4m while average takings per unit night occupied increased from \$62 to \$66.

CARAVAN PARKS

- Capacity available increased slightly from 288,300 to 288,419 powered and unpowered sites and cabins, etc. of which 47,159 sites, etc. (16.4 per cent) were occupied by long-term residents, 44,428 sites (15.4 per cent) were permanently reserved but only casually occupied by their tenants and an average of 31,477 sites (10.9 per cent) were occupied by other short-term guests.
- Site nights occupied increased by 1.1 per cent to 11.3 million and the site occupancy rate rose from 42.4 per cent to 42.7 per cent.
- Takings from accommodation increased by 5.0 per cent from \$108.5m to \$114.0m at an average of \$10 per site night occupied.

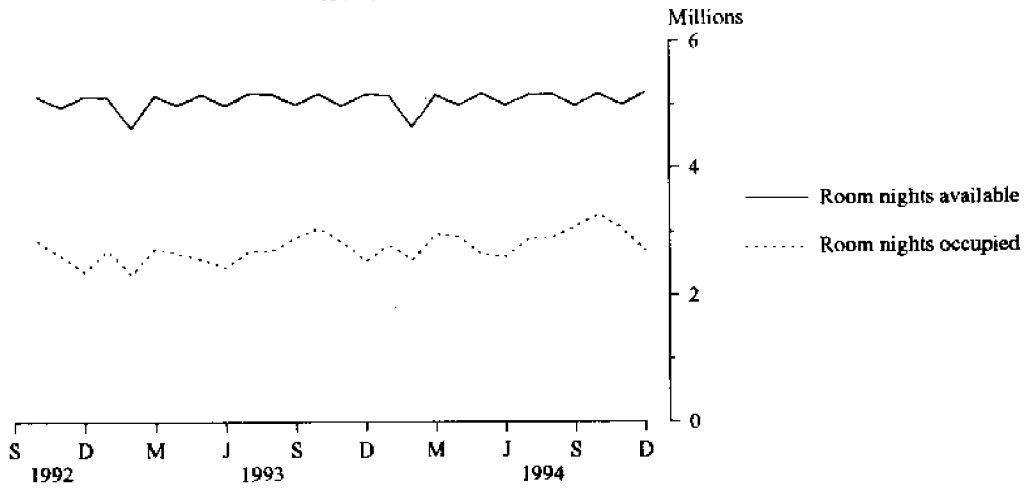
VISITOR HOSTELS

- Bed spaces available increased by 4.4 per cent from 24,960 to 26,063 and guest nights increased by 9.2 per cent to 1.08 million.
- The bed occupancy rate increased from 43.2 per cent to 45.1 per cent.
- Accommodation takings increased by 16.2 per cent from \$11.7m to \$13.6m at an average of \$13 per guest night.

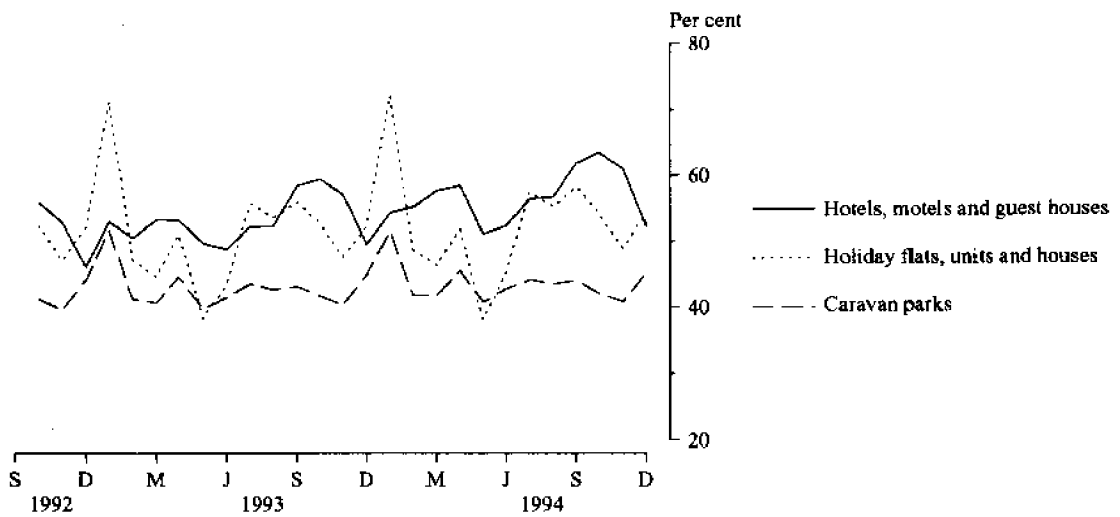
INQUIRIES

- *for further information about statistics in this publication and the availability of related unpublished statistics, contact John Alexander on Brisbane (07) 222 6215 or any ABS office.*
- *for information about other ABS statistics and services, refer to the back page of this publication.*

**MONTHLY ROOM NIGHTS AVAILABLE AND OCCUPIED:
HOTELS, MOTELS AND GUEST HOUSES,
AUSTRALIA**



**MONTHLY OCCUPANCY RATES,
AUSTRALIA**



**MONTHLY TAKINGS FROM ACCOMMODATION,
AUSTRALIA**

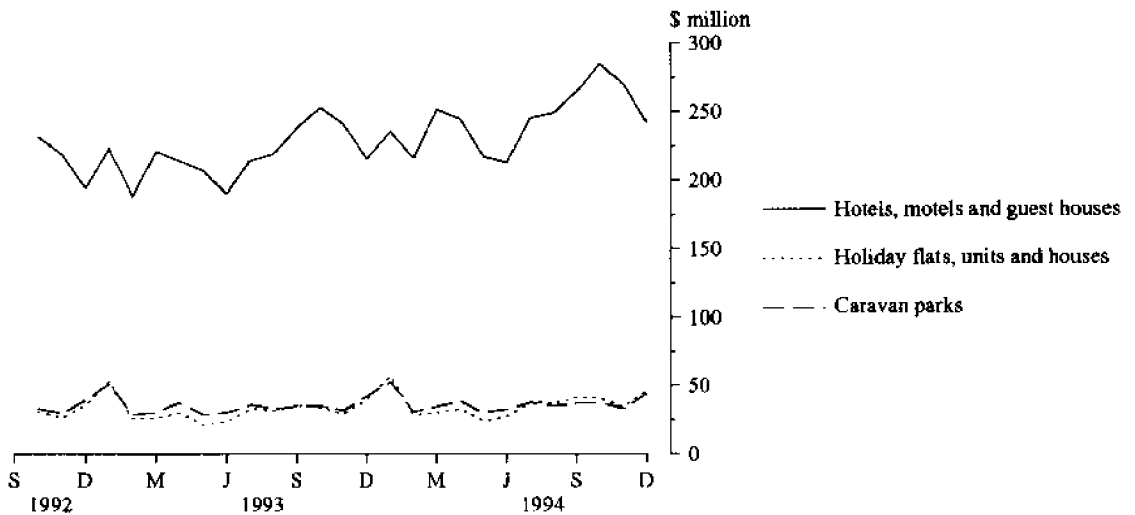


TABLE 1 — SUMMARY OF HOTELS, MOTELS AND GUEST HOUSES WITH FACILITIES, AUSTRALIA (a)

Particulars	Unit	Quarter ended				Year ended			
		September 1993	December 1993	March 1994	June 1994	September 1994	December 1994	December 1993	December 1994
LICENSED HOTELS WITH FACILITIES									
Establishments	No.	1,185	1,138	1,131	1,139	1,132	1,135
Guest rooms	No.	66,348	66,517	66,386	66,443	66,524	66,898
Bed spaces	No.	174,935	175,476	175,508	176,344	177,606	179,221
Employment (persons)	No.	64,208	65,735	65,257	64,744	66,323	67,737
Room nights occupied	'000	3,422.0	3,725.3	3,647.9	3,491.7	3,849.5	4,046.4	13,526.8	15,035.4
Room occupancy rate	per cent	56.1	61.0	61.1	57.7	63.0	65.8	56.2	61.9
Guest nights	'000	5,695.1	6,261.5	6,145.9	5,724.2	6,505.2	6,729.7	22,542.8	25,105.0
Bed occupancy rate	per cent	35.4	39.0	38.9	35.7	39.9	40.8	35.6	38.8
Guest arrivals	'000	2,447.5	2,715.2	2,673.6	2,454.6	2,802.3	2,924.1	9,618.2	10,854.7
Average length of stay	days	2.3	2.3	2.3	2.3	2.3	2.3	2.3	2.3
Takings from accommodation	\$'000	344,815	391,787	385,605	362,964	409,128	450,458	1,378,868	1,608,156
MOTELS AND GUEST HOUSES WITH FACILITIES									
Establishments	No.	3,739	3,694	3,684	3,700	3,674	3,684
Guest rooms	No.	100,670	100,226	99,876	100,227	99,883	100,065
Bed spaces	No.	304,200	302,890	302,063	303,246	301,775	303,251
Employment (persons)	No.	37,236	36,843	36,616	36,911	37,697	37,495
Room nights occupied	'000	4,938.5	4,777.8	4,707.0	4,705.3	5,075.3	5,004.8	18,870.7	19,492.4
Room occupancy rate	per cent	53.4	51.9	52.4	51.6	55.3	54.4	51.4	53.4
Guest nights	'000	9,036.9	8,755.5	8,815.4	8,485.2	9,305.9	9,127.2	34,614.4	35,733.6
Bed occupancy rate	per cent	32.3	31.5	32.5	30.8	33.5	32.7	31.2	32.4
Guest arrivals	'000	4,858.1	4,712.8	4,641.1	4,588.1	5,042.6	4,897.4	18,491.8	19,169.2
Average length of stay	days	1.9	1.9	1.9	1.8	1.8	1.9	1.9	1.9
Takings from accommodation	\$'000	327,348	317,754	318,309	311,549	350,767	346,451	1,247,245	1,327,076
TOTAL HOTELS, MOTELS AND GUEST HOUSES WITH FACILITIES									
Establishments	No.	4,924	4,832	4,815	4,839	4,806	4,819
Guest rooms	No.	167,018	166,743	166,262	166,670	166,407	166,963
Bed spaces	No.	479,135	478,366	477,571	479,590	479,381	482,472
Employment (persons)	No.	101,444	102,578	101,873	101,655	104,020	105,232
Room nights occupied	'000	8,360.5	8,503.1	8,355.0	8,196.9	8,924.8	9,051.2	32,397.5	34,527.9
Room occupancy rate	per cent	54.5	55.5	55.9	54.1	58.4	59.0	53.3	56.8
Guest nights	'000	14,732.0	15,017.0	14,961.3	14,209.4	15,811.0	15,856.9	57,157.2	60,838.6
Bed occupancy rate	per cent	33.5	34.2	34.8	32.6	35.9	35.8	32.8	34.8
Guest arrivals	'000	7,305.6	7,428.1	7,314.7	7,042.7	7,844.9	7,821.5	28,110.0	30,023.9
Average length of stay	days	2.0	2.0	2.0	2.0	2.0	2.0	2.0	2.0
Takings from accommodation	\$'000	672,163	709,542	703,914	674,513	759,895	796,910	2,626,112	2,935,231

(a) From December quarter 1993, establishments with fewer than 5 rooms have been excluded from the scope of this collection. See Explanatory Note 2 (page 20).

TABLE 2 — SUMMARY OF CARAVAN PARKS, AUSTRALIA

Particulars	Unit	Quarter ended				Year ended			
		September	December	March	June	September	December	December	December
		1993	1993	1994	1994	1994	1994	1993	1994
SHORT-TERM CARAVAN PARKS									
Establishments	No.	1,609	1,621	1,621	1,627	1,665	1,659
Capacity									
On-site vans	No.	8,828	8,856	8,846	8,778	8,862	8,901
Other powered sites	No.	118,312	118,829	119,046	119,565	120,654	120,506
Unpowered sites	No.	52,310	52,415	51,861	51,258	52,132	51,716
Cabins, etc.	No.	8,669	8,834	8,966	9,080	9,401	9,651
Total capacity	No.	188,119	188,934	188,719	188,681	191,049	190,774
Sites occupied by long-term guests	No.	9,365	9,262	9,386	9,550	9,684	9,575
Other sites permanently reserved	No.	40,539	41,330	41,954	41,594	41,829	42,251
Employment (persons)	No.	5,563	5,867	5,813	5,704	5,890	6,248
Site nights occupied	'000	6,741.8	6,709.4	7,251.0	6,725.7	7,030.6	6,899.8	26,110.3	27,907.0
Site occupancy rate	per cent	39.0	38.8	42.7	39.3	40.1	39.3	38.8	40.3
Takings from accommodation	\$'000	55,807	61,678	69,484	53,625	60,551	66,364	229,846	250,023
LONG-TERM CARAVAN PARKS									
Establishments	No.	1,086	1,083	1,080	1,075	1,056	1,057
Capacity									
On-site vans	No.	12,070	12,103	12,221	12,096	11,951	11,988
Other powered sites	No.	64,695	64,271	63,932	63,685	62,543	62,932
Unpowered sites	No.	16,888	16,855	16,428	16,529	16,080	16,130
Cabins, etc.	No.	6,094	6,137	6,278	6,528	6,520	6,595
Total capacity	No.	99,747	99,366	98,859	98,838	97,094	97,645
Sites occupied by long-term guests	No.	38,687	38,065	38,205	38,485	38,174	37,584
Other sites permanently reserved	No.	2,255	2,474	2,511	2,491	2,234	2,177
Employment (persons)	No.	3,777	3,827	3,845	3,769	3,735	3,752
Site nights occupied	'000	4,700.6	4,486.9	4,449.1	4,530.3	4,621.8	4,422.1	19,022.4	18,023.3
Site occupancy rate	per cent	51.2	49.1	50.0	50.4	51.7	49.2	50.8	50.3
Takings from accommodation	\$'000	48,567	46,827	47,613	47,240	49,286	47,617	190,970	191,757
TOTAL CARAVAN PARKS									
Establishments	No.	2,695	2,704	2,701	2,702	2,721	2,716
Capacity									
On-site vans	No.	20,898	20,959	21,067	20,874	20,813	20,889
Other powered sites	No.	183,007	183,100	182,978	183,250	183,197	183,438
Unpowered sites	No.	69,198	69,270	68,289	67,787	68,212	67,846
Cabins, etc.	No.	14,763	14,971	15,244	15,608	15,921	16,246
Total capacity	No.	287,866	288,300	287,578	287,519	288,143	288,419
Sites occupied by long-term guests	No.	48,052	47,327	47,591	48,035	47,858	47,159
Other sites permanently reserved	No.	42,794	43,804	44,465	44,085	44,063	44,428
Employment (persons)	No.	9,340	9,694	9,658	9,473	9,625	10,000
Site nights occupied	'000	11,442.4	11,196.3	11,700.1	11,256.0	11,652.4	11,321.9	45,132.6	45,930.3
Site occupancy rate	per cent	43.2	42.4	45.2	43.1	44.0	42.7	43.1	43.7
Takings from accommodation	\$'000	104,374	108,504	117,097	100,865	109,837	113,981	420,816	441,779

TABLE 3 — SUMMARY OF HOLIDAY FLATS, UNITS AND HOUSES, AUSTRALIA

Particulars	Unit	Quarter ended				Year ended			
		September 1993	December 1993	March 1994	June 1994	September 1994	December 1994	December 1993	December 1994
Letting entities	No.	1,453	1,493	1,491	1,495	1,510	1,535
Flats, units and houses									
Single bedroom	No.	7,733	7,986	7,848	7,758	7,972	8,141
Multiple bedroom	No.	26,726	27,500	27,562	27,554	28,284	29,393
<i>Total flats, units and houses</i>	<i>No.</i>	<i>34,459</i>	<i>35,486</i>	<i>35,410</i>	<i>35,312</i>	<i>36,256</i>	<i>37,534</i>	<i>..</i>	<i>..</i>
Bed spaces	No.	148,721	154,103	154,325	153,381	156,912	163,586
Employment (persons) (a)	No.	4,868	5,155	5,221	5,206	5,363	5,602
Unit nights occupied	'000	1,750.8	1,663.6	1,781.8	1,447.6	1,899.5	1,814.4	6,466.8	6,943.2
Unit occupancy rate	per cent	55.3	51.1	56.1	45.1	57.1	52.6	51.4	52.7
Unit lettings	'000	293.2	312.9	314.6	277.1	324.8	353.8	1,152.9	1,270.3
Average length of stay	days	6.0	5.3	5.7	5.2	5.8	5.1	5.6	5.5
Takings from accommodation	\$'000	99,577	102,697	116,167	84,752	116,042	120,412	383,297	437,373

(a) Employment numbers exclude real estate agents and their employees.

TABLE 4 — SUMMARY OF VISITOR HOSTELS, AUSTRALIA

Particulars	Unit	Quarter ended				Year ended			
		September 1993	December 1993	March 1994	June 1994	September 1994	December 1994	December 1993	December 1994
Establishments	No.	410	414	426	417	422	433
Bed spaces	No.	24,681	24,960	25,748	25,061	25,634	26,063
Employment (persons)	No.	1,487	1,508	1,535	1,512	1,538	1,602
Guest nights	'000	994.9	989.3	1,042.9	924.4	1,026.0	1,080.7	3,866.3	4,074.0
Bed occupancy rate	per cent	43.9	43.2	45.3	40.6	43.6	45.1	42.8	43.7
Guest arrivals	'000	376.5	364.3	408.6	354.2	379.8	404.6	1,440.0	1,547.1
Average length of stay	days	2.6	2.7	2.6	2.6	2.7	2.7	2.7	2.6
Takings from accommodation	\$'000	11,511	11,694	12,560	11,031	12,425	13,590	45,182	49,606

TABLE 5 — HOTELS, MOTELS AND GUEST HOUSES WITH FACILITIES BY STAR GRADING
NEW SOUTH WALES

Particulars	Licensed hotels with facilities	Motels and guest houses	Star grading					Ungraded	Total
			1	2	3	4	5		
ESTABLISHMENTS, CAPACITY AND EMPLOYMENT									
<i>December quarter 1993—</i>									
Establishments	267	1,459	38	559	741	123	19	246	1,726
Guest rooms	18,512	38,389	561	11,312	21,820	11,712	5,726	5,770	56,901
Bed spaces	46,916	117,847	1,433	35,148	65,815	33,462	12,707	16,198	164,763
Employment (persons)	16,038	14,528	281	4,391	8,552	8,450	5,725	3,167	30,566
<i>December quarter 1994</i>									
Establishments	271	1,447	41	513	812	124	16	212	1,718
Guest rooms	18,896	37,749	737	10,172	23,925	11,972	4,691	5,148	56,645
Bed spaces	48,868	116,430	1,998	31,479	72,452	33,977	11,299	14,093	165,298
Employment (persons)	16,914	14,624	494	4,025	9,639	9,372	4,846	3,162	31,538
ROOM NIGHTS OCCUPIED ('000)									
<i>December quarter 1993</i>	1,025.8	1,846.0	21.8	453.9	1,112.5	721.6	359.5	202.4	2,871.8
<i>1994—</i>									
October	400.5	694.9	8.5	156.6	461.9	285.9	113.3	69.3	1,095.4
November	416.8	615.5	8.2	132.7	414.6	285.2	123.7	67.8	1,032.3
December	366.2	571.4	8.2	128.0	376.9	256.7	107.3	60.4	937.5
<i>December quarter 1994</i>	1,183.5	1,881.7	24.9	417.4	1,253.4	827.7	344.4	197.5	3,065.3
ROOM OCCUPANCY RATES (per cent)									
<i>December quarter 1993</i>	60.7	52.4	42.3	44.3	55.5	67.0	68.2	38.3	55.1
<i>1994—</i>									
October	68.4	59.4	37.1	49.7	62.3	77.0	77.9	43.6	62.4
November	73.5	54.4	37.2	43.5	57.8	79.4	87.9	44.3	60.8
December	62.5	48.8	35.8	40.6	50.8	69.2	73.8	38.0	53.4
<i>December quarter 1994</i>	68.1	54.2	36.7	44.6	56.9	75.2	79.8	41.9	58.8
GUEST NIGHTS ('000)									
<i>December quarter 1993</i>	1,683.4	3,439.1	36.4	840.8	2,049.7	1,250.0	611.1	334.6	5,122.6
<i>1994—</i>									
October	641.7	1,302.8	14.6	293.3	853.9	488.0	181.5	113.2	1,944.5
November	640.3	1,079.8	13.2	231.0	714.7	468.2	187.0	106.1	1,720.1
December	616.8	1,128.6	13.3	247.9	730.3	474.6	178.4	100.9	1,745.4
<i>December quarter 1994</i>	1,898.8	3,511.2	41.0	772.2	2,298.9	1,430.8	546.8	320.2	5,410.0
BED OCCUPANCY RATES (per cent)									
<i>December quarter 1993</i>	39.7	31.8	27.6	26.8	33.9	40.6	52.3	22.5	34.0
<i>1994—</i>									
October	42.4	36.1	23.5	30.1	38.0	46.3	51.8	26.1	38.0
November	43.7	31.0	22.0	24.5	32.9	45.9	55.2	25.4	34.7
December	40.7	31.3	21.5	25.4	32.5	45.1	50.9	23.2	34.1
<i>December quarter 1994</i>	42.2	32.8	22.3	26.7	34.5	45.8	52.6	24.9	35.6
GUEST ARRIVALS ('000)									
<i>December quarter 1993</i>	791.0	1,966.2	19.1	528.9	1,210.7	571.3	236.7	190.5	2,757.2
<i>1994—</i>									
October	312.4	750.7	8.5	185.9	499.3	227.8	85.9	55.7	1,063.2
November	318.5	607.5	7.1	144.9	408.3	220.4	96.3	49.0	926.0
December	302.6	643.2	7.2	159.2	427.1	217.2	85.9	49.3	945.8
<i>December quarter 1994</i>	933.6	2,001.4	22.8	490.0	1,334.7	665.4	268.0	154.1	2,935.0
AVERAGE LENGTH OF STAY (days)									
<i>December quarter 1993</i>	2.1	1.7	1.9	1.6	1.7	2.2	2.6	1.8	1.9
<i>December quarter 1994</i>	2.0	1.8	1.8	1.6	1.7	2.2	2.0	2.1	1.8
TAKINGS FROM ACCOMMODATION (\$'000)									
<i>December quarter 1993</i>	113,482	130,079	926	22,992	75,872	73,726	54,687	15,358	243,561
<i>1994—</i>									
October	46,361	49,906	431	7,820	32,600	30,924	17,699	6,793	96,267
November	49,007	44,188	398	6,479	29,299	30,858	19,389	6,771	93,195
December	42,294	43,142	384	6,758	27,929	28,078	16,447	5,841	85,436
<i>December quarter 1994</i>	137,662	137,236	1,213	21,058	89,827	89,861	53,535	19,405	274,898

TABLE 5—HOTELS, MOTELS AND GUEST HOUSES WITH FACILITIES BY STAR GRADING *continued*
VICTORIA

Particulars	Licensed hotels with facilities	Motels and guest houses	Star grading					Ungraded	Total
			1	2	3	4	5		
ESTABLISHMENTS, CAPACITY AND EMPLOYMENT									
<i>December quarter 1993—</i>									
Establishments	199	826	23	385	456	66	8	87	1,025
Guest rooms	10,279	19,986	284	7,490	12,246	5,896	2,654	1,695	30,265
Bed spaces	24,793	58,439	725	21,258	36,303	14,564	5,526	4,856	83,232
Employment (persons)	9,699	6,501	267	3,394	4,512	3,911	3,193	923	16,200
<i>December quarter 1994—</i>									
Establishments	189	817	17	374	479	72	9	55	1,006
Guest rooms	10,089	19,803	228	7,059	12,676	6,057	2,708	1,164	29,892
Bed spaces	24,598	57,844	586	19,926	37,397	15,368	5,664	3,501	82,442
Employment (persons)	9,592	6,460	227	3,269	4,641	3,941	3,290	684	16,052
ROOM NIGHTS OCCUPIED ('000)									
<i>December quarter 1993</i>	532.1	792.3	5.2	236.5	532.5	343.4	165.2	41.7	1,324.4
<i>1994</i>									
October	208.9	316.9	1.7	85.9	217.7	140.2	68.0	12.4	525.8
November	211.3	288.5	1.2	77.4	200.8	142.8	66.1	11.6	499.9
December	184.8	250.5	1.0	71.6	172.8	122.0	58.1	9.9	435.3
<i>December quarter 1994</i>	605.0	855.9	3.9	234.9	591.2	404.9	192.1	33.9	1,460.9
ROOM OCCUPANCY RATES (per cent)									
<i>December quarter 1993</i>	56.3	43.1	19.7	34.3	47.3	63.3	67.7	26.7	47.6
<i>1994</i>									
October	67.2	51.6	23.5	39.6	55.4	74.6	81.0	34.3	56.9
November	70.0	48.6	18.1	36.7	52.8	78.6	81.3	33.2	55.8
December	59.1	40.9	14.2	32.8	44.0	65.0	69.2	27.5	47.0
<i>December quarter 1994</i>	65.4	47.0	18.6	36.4	50.7	72.7	77.1	31.6	53.2
GUEST NIGHTS ('000)									
<i>December quarter 1993</i>	827.6	1,384.6	7.3	421.4	925.5	542.0	243.1	72.8	2,212.1
<i>1994—</i>									
October	323.3	546.2	2.2	151.8	377.4	215.3	99.7	23.2	869.5
November	320.2	475.4	1.7	134.1	330.1	215.2	93.5	21.1	795.6
December	294.6	453.3	1.6	133.7	308.5	195.2	89.7	19.0	747.9
<i>December quarter 1994</i>	938.0	1,475.0	5.5	419.5	1,016.0	625.7	282.9	63.3	2,413.0
BED OCCUPANCY RATES (per cent)									
<i>December quarter 1993</i>	36.3	25.8	10.9	21.5	27.7	40.5	47.8	16.3	28.9
<i>1994</i>									
October	42.6	30.5	12.1	24.7	32.6	45.2	56.8	21.4	34.1
November	43.5	27.4	9.6	22.5	29.4	46.7	55.0	20.1	32.2
December	38.7	25.3	9.1	21.7	26.6	41.0	51.1	17.5	29.3
<i>December quarter 1994</i>	41.6	27.7	10.3	23.0	29.5	44.3	54.3	19.7	31.9
GUEST ARRIVALS ('000)									
<i>December quarter 1993</i>	393.2	834.4	4.6	262.2	561.0	248.1	113.9	37.8	1,227.6
<i>1994—</i>									
October	140.8	321.7	1.1	88.2	227.3	93.1	41.4	11.4	462.5
November	145.1	283.4	1.0	78.8	199.2	96.6	42.7	10.2	428.5
December	138.6	270.8	1.1	79.2	187.4	91.1	41.9	8.7	409.4
<i>December quarter 1994</i>	424.5	875.8	3.1	246.1	614.0	280.7	126.0	30.3	1,300.3
AVERAGE LENGTH OF STAY (days)									
<i>December quarter 1993</i>	2.1	1.7	1.6	1.6	1.6	2.2	2.1	1.9	1.8
<i>December quarter 1994</i>	2.2	1.7	1.8	1.7	1.7	2.2	2.2	2.1	1.9
TAKINGS FROM ACCOMMODATION (\$'000)									
<i>December quarter 1993</i>	58,112	52,390	169	11,788	35,226	36,309	24,203	2,808	110,502
<i>1994—</i>									
October	24,412	21,590	71	4,373	14,930	15,246	10,534	848	46,002
November	24,242	19,630	40	3,976	13,524	15,693	9,839	800	43,871
December	19,995	17,203	34	3,671	11,747	12,841	8,201	704	37,198
<i>December quarter 1994</i>	68,649	58,423	145	12,020	40,201	43,780	28,573	2,352	127,072

TABLE 5 — HOTELS, MOTELS AND GUEST HOUSES WITH FACILITIES BY STAR GRADING—continued
QUEENSLAND

Particulars	Licensed hotels with facilities	Motels and guest houses	Star grading					Ungraded	Total
			1	2	3	4	5		
ESTABLISHMENTS, CAPACITY AND EMPLOYMENT									
<i>December quarter 1993</i>									
Establishments	262	836	20	457	393	54	18	156	1,098
Guest rooms	17,917	22,208	300	8,550	14,930	7,803	5,533	3,009	40,125
Bed spaces	53,013	68,551	867	25,681	45,489	24,956	15,746	8,825	121,564
Employment (persons)	21,104	8,417	139	3,908	7,848	6,192	9,109	2,325	29,521
<i>December quarter 1994</i>									
Establishments	263	838	15	418	420	55	15	178	1,101
Guest rooms	18,207	22,553	228	7,611	15,981	8,276	4,351	4,313	40,760
Bed spaces	54,952	69,679	583	23,062	48,986	26,994	12,588	12,418	124,631
Employment (persons)	21,835	8,758	102	3,391	8,739	9,087	6,099	3,175	30,593
ROOM NIGHTS OCCUPIED ('000)									
<i>December quarter 1993</i>	1,122.9	1,187.8	10.7	401.9	854.7	511.7	397.3	134.4	2,310.7
<i>1994—</i>									
October	418.5	459.2	2.8	131.2	355.2	199.3	114.4	74.7	877.6
November	383.1	408.2	2.8	115.4	317.8	180.4	108.2	66.6	791.3
December	363.2	373.3	2.8	107.8	290.7	169.6	102.3	63.2	736.5
<i>December quarter 1994</i>	1,164.7	1,240.7	8.4	354.4	963.7	549.4	325.0	204.5	2,405.4
ROOM OCCUPANCY RATES (per cent)									
<i>December quarter 1993</i>	68.1	58.2	38.9	51.1	62.3	71.3	78.0	48.8	62.6
<i>1994—</i>									
October	74.1	65.8	39.8	55.6	71.8	77.9	84.8	56.0	69.5
November	70.1	60.4	40.7	50.5	66.3	72.9	82.9	51.5	64.8
December	64.3	53.5	40.0	45.7	58.7	66.2	75.9	47.3	58.3
<i>December quarter 1994</i>	69.5	59.9	40.1	50.6	65.6	72.3	81.2	51.6	64.2
GUEST NIGHTS ('000)									
<i>December quarter 1993</i>	2,086.8	2,231.2	18.3	732.3	1,601.2	984.6	728.8	252.8	4,318.0
<i>1994—</i>									
October	767.4	844.6	4.6	234.0	655.1	377.9	198.6	141.7	1,612.0
November	687.8	722.3	4.3	196.1	567.7	331.9	187.6	122.5	1,410.1
December	711.4	750.5	4.8	206.5	590.0	340.7	196.3	123.6	1,461.9
<i>December quarter 1994</i>	2,166.6	2,317.4	13.7	636.7	1,812.8	1,050.5	582.5	387.8	4,484.0
BED OCCUPANCY RATES (per cent)									
<i>December quarter 1993</i>	42.8	35.4	22.9	31.0	38.3	42.9	50.3	31.3	38.6
<i>1994—</i>									
October	45.0	39.2	25.3	32.7	43.2	45.3	50.9	37.0	41.8
November	41.7	34.6	24.6	28.3	38.7	41.1	49.7	32.9	37.8
December	41.8	34.8	26.6	28.9	38.9	40.8	50.3	32.1	37.9
<i>December quarter 1994</i>	42.9	36.2	25.5	30.0	40.3	42.4	50.3	34.0	39.1
GUEST ARRIVALS ('000)									
<i>December quarter 1993</i>	730.0	1,066.9	9.4	389.5	724.1	353.8	235.5	84.6	1,796.9
<i>1994—</i>									
October	259.4	411.7	2.1	127.4	280.4	125.8	81.2	54.1	671.1
November	247.6	347.4	1.8	107.5	248.8	120.0	67.5	49.3	595.0
December	242.4	361.9	2.0	114.0	259.4	115.1	65.4	48.4	604.3
<i>December quarter 1994</i>	749.4	1,121.0	5.9	349.0	788.6	361.0	214.2	151.8	1,870.4
AVERAGE LENGTH OF STAY (days)									
<i>December quarter 1993</i>	2.9	2.1	1.9	1.9	2.2	2.8	3.1	3.0	2.4
<i>December quarter 1994</i>	2.9	2.1	2.3	1.8	2.3	2.9	2.7	2.6	2.4
TAKINGS FROM ACCOMMODATION (\$'000)									
<i>December quarter 1993</i>	129,142	74,229	587	18,244	61,044	52,392	61,279	9,825	203,370
<i>1994—</i>									
October	51,124	29,835	107	6,411	27,048	22,514	19,376	5,504	80,959
November	46,568	26,146	105	5,591	23,577	20,043	18,541	4,858	72,714
December	46,400	25,259	114	5,634	22,732	19,668	18,667	4,843	71,659
<i>December quarter 1994</i>	144,092	81,240	325	17,636	73,357	62,225	56,584	15,205	225,332

TABLE 5 — HOTELS, MOTELS AND GUEST HOUSES WITH FACILITIES BY STAR GRADING *continued*
SOUTH AUSTRALIA

Particulars	Licensed hotels with facilities	Motels and guest houses	Star grading					Ungraded	Total
			1	2	3	4	5		
ESTABLISHMENTS, CAPACITY AND EMPLOYMENT									
<i>December quarter 1993</i>									
Establishments	114	228	13	148	137	17	3	24	342
Guest rooms	4,479	6,171	179	3,314	4,670	1,311	1,083	293	10,650
Bed spaces	10,929	18,935	370	9,348	13,818	3,408	2,166	754	29,864
Employment (persons)	5,134	2,490	241	2,137	2,583	1,030	1,058	575	7,624
<i>December quarter 1994</i>									
Establishments	117	226	13	144	141	18	3	24	343
Guest rooms	4,300	6,308	155	3,030	4,776	1,243	1,081	323	10,608
Bed spaces	10,593	19,295	332	8,488	14,076	3,943	2,166	883	29,888
Employment (persons)	5,378	2,581	224	2,019	2,873	1,152	1,047	644	7,959
ROOM NIGHTS OCCUPIED ('000)									
<i>December quarter 1993</i>	210.0	282.7	3.7	116.8	226.6	71.0	64.6	9.9	492.6
<i>1994</i>									
October	77.5	114.7	1.5	43.0	88.2	29.8	26.2	3.6	192.2
November	75.6	106.5	1.2	35.2	84.2	30.8	26.7	4.0	182.1
December	55.4	87.3	1.0	32.3	64.9	23.5	17.2	3.8	142.7
<i>December quarter 1994</i>	208.5	308.5	3.8	110.5	237.3	84.1	70.1	11.3	517.0
ROOM OCCUPANCY RATES (per cent)									
<i>December quarter 1993</i>	51.0	49.8	22.6	38.3	52.8	69.4	64.8	36.8	50.3
<i>1994—</i>									
October	58.2	58.7	31.7	45.8	59.5	77.3	78.1	35.9	58.5
November	58.7	56.3	26.8	38.8	58.7	82.6	82.3	40.8	57.2
December	41.7	44.6	21.1	34.5	43.9	61.0	51.3	37.5	43.4
<i>December quarter 1994</i>	52.8	53.2	26.5	39.7	54.0	73.5	70.5	38.0	53.0
GUEST NIGHTS ('000)									
<i>December quarter 1993</i>	322.0	502.5	5.0	202.8	396.3	114.6	92.1	13.7	824.5
<i>1994</i>									
October	119.5	202.2	2.4	77.0	151.7	47.2	37.7	5.7	321.8
November	110.1	175.7	1.8	58.8	134.3	48.3	36.5	6.1	285.8
December	89.0	159.4	1.5	59.9	116.7	38.8	25.3	6.3	248.5
<i>December quarter 1994</i>	318.7	537.3	5.7	195.7	402.7	134.3	99.5	18.1	856.1
BED OCCUPANCY RATES (per cent)									
<i>December quarter 1993</i>	32.0	28.9	14.6	23.6	31.2	36.6	46.2	19.7	30.0
<i>1994</i>									
October	36.4	33.8	23.0	29.3	34.8	38.6	56.2	20.9	34.7
November	34.7	30.4	18.4	23.1	31.8	40.9	56.1	23.2	31.9
December	27.2	26.7	14.6	22.8	26.7	31.7	37.6	23.0	26.8
<i>December quarter 1994</i>	32.7	30.3	18.7	25.1	31.1	37.0	49.9	22.3	31.1
GUEST ARRIVALS ('000)									
<i>December quarter 1993</i>	157.6	284.5	2.7	121.3	220.6	50.5	40.9	6.2	442.1
<i>1994—</i>									
October	56.5	113.5	1.1	45.5	84.4	21.8	13.8	3.4	170.0
November	49.9	93.5	0.8	34.6	71.9	19.4	13.7	3.0	143.5
December	44.2	92.1	0.7	36.8	66.8	17.4	11.0	3.6	136.3
<i>December quarter 1994</i>	150.7	299.1	2.7	116.9	223.1	58.6	38.5	10.0	449.8
AVERAGE LENGTH OF STAY (days)									
<i>December quarter 1993</i>	2.0	1.8	1.9	1.7	1.8	2.3	2.3	2.2	1.9
<i>December quarter 1994</i>	2.1	1.8	2.1	1.7	1.8	2.3	2.6	1.8	1.9
TAKINGS FROM ACCOMMODATION (\$'000)									
<i>December quarter 1993</i>	19,385	18,711	103	5,555	15,538	7,568	8,816	516	38,096
<i>1994</i>									
October	6,781	7,525	48	1,998	5,859	2,930	3,334	136	14,306
November	8,398	8,113	39	1,807	6,334	3,746	4,432	153	16,511
December	4,656	5,793	33	1,510	4,340	2,426	1,993	147	10,449
<i>December quarter 1994</i>	19,834	21,431	121	5,315	16,533	9,102	9,759	435	41,265

TABLE 5 — HOTELS, MOTELS AND GUEST HOUSES WITH FACILITIES BY STAR GRADING—*continued*
WESTERN AUSTRALIA

Particulars	Licensed hotels with facilities	Motels and guest houses	Star grading					Ungraded	Total
			1	2	3	4	5		
ESTABLISHMENTS, CAPACITY AND EMPLOYMENT									
<i>December quarter 1993—</i>									
Establishments	161	167	10	125	112	9	9	63	328
Guest rooms	8,158	6,536	170	3,614	6,064	879	2,424	1,543	14,694
Bed spaces	19,803	18,199	372	9,185	16,537	2,295	6,021	3,592	38,002
Employment (persons)	7,149	2,475	152	1,812	3,076	1,189	2,460	935	9,624
<i>December quarter 1994</i>									
Establishments	160	175	12	134	108	12	8	61	335
Guest rooms	8,177	6,557	219	3,783	5,906	948	2,376	1,502	14,734
Bed spaces	19,964	18,290	419	9,580	16,208	2,447	5,871	3,729	38,254
Employment (persons)	7,069	2,558	136	2,009	2,704	1,280	2,498	1,000	9,627
ROOM NIGHTS OCCUPIED ('000)									
<i>December quarter 1993</i>	443.8	331.6	4.6	155.6	330.6	64.6	166.2	53.8	775.4
<i>1994—</i>									
October	172.3	137.1	1.7	67.2	128.4	25.0	63.5	23.5	309.4
November	160.1	115.7	1.7	55.7	113.0	24.5	61.6	19.4	275.8
December	142.3	101.6	1.7	50.5	97.2	22.3	55.1	17.1	243.9
<i>December quarter 1994</i>	474.7	354.3	5.0	173.5	338.7	71.8	180.2	59.9	829.1
ROOM OCCUPANCY RATES (per cent)									
<i>December quarter 1993</i>	59.1	55.1	29.3	46.8	59.3	79.8	74.5	37.9	57.4
<i>1994—</i>									
October	68.0	67.4	25.0	57.3	70.1	85.2	86.2	50.5	67.7
November	65.4	58.8	25.3	49.1	63.8	86.2	86.4	43.4	62.5
December	56.3	50.0	24.4	43.1	53.1	75.7	74.8	37.1	53.5
<i>December quarter 1994</i>	63.2	58.7	24.9	49.8	62.3	82.4	82.4	43.7	61.2
GUEST NIGHTS ('000)									
<i>December quarter 1993</i>	709.3	602.5	7.3	259.8	598.8	102.1	258.2	85.7	1,311.8
<i>1994—</i>									
October	268.2	249.6	2.3	113.3	228.6	39.0	93.7	40.8	517.8
November	234.0	194.4	2.0	86.4	184.7	36.1	88.0	31.1	428.4
December	235.0	191.2	2.4	88.7	181.9	37.2	87.6	28.5	426.2
<i>December quarter 1994</i>	737.1	635.3	6.6	288.4	595.2	112.3	269.4	100.4	1,372.4
BED OCCUPANCY RATES (per cent)									
<i>December quarter 1993</i>	38.9	36.0	21.3	30.7	39.4	48.4	46.6	25.9	37.5
<i>1994—</i>									
October	43.3	44.0	17.8	38.2	45.5	51.4	51.5	35.3	43.7
November	39.1	35.4	15.7	30.1	38.0	49.2	50.0	28.1	37.4
December	38.0	33.7	18.2	29.9	36.2	49.0	48.2	24.9	36.0
<i>December quarter 1994</i>	40.2	37.8	17.2	32.7	39.9	49.9	49.9	29.5	39.0
GUEST ARRIVALS ('000)									
<i>December quarter 1993</i>	302.7	261.1	3.8	127.5	246.4	38.6	114.6	33.0	563.8
<i>1994—</i>									
October	111.2	106.4	1.3	55.9	91.1	12.5	41.0	15.8	217.7
November	96.3	83.4	0.9	42.5	72.3	11.9	39.7	12.5	179.7
December	99.1	82.8	1.2	45.7	71.6	11.9	39.5	12.0	181.9
<i>December quarter 1994</i>	306.6	272.7	3.4	144.1	235.0	36.4	120.2	40.3	579.3
AVERAGE LENGTH OF STAY (days)									
<i>December quarter 1993</i>	2.3	2.3	1.9	2.0	2.4	2.6	2.3	2.6	2.3
<i>December quarter 1994</i>	2.4	2.3	2.0	2.0	2.5	3.1	2.2	2.5	2.4
TAKINGS FROM ACCOMMODATION (\$'000)									
<i>December quarter 1993</i>	36,830	20,763	167	7,818	21,487	6,320	19,278	2,522	57,593
<i>1994—</i>									
October	15,293	9,278	50	3,659	8,954	2,675	7,786	1,447	24,571
November	14,487	7,501	43	2,927	7,733	2,673	7,621	992	21,989
December	12,831	6,871	46	2,772	6,879	2,403	6,761	842	19,703
<i>December quarter 1994</i>	42,612	23,651	139	9,358	23,565	7,751	22,168	3,281	66,263

TABLE 5 — HOTELS, MOTELS AND GUEST HOUSES WITH FACILITIES BY STAR GRADING—*continued*
TASMANIA

Particulars	Licensed hotels with facilities	Motels and guest houses	Star grading			Total
			1, 2 and ungraded	3	4 and 5	
ESTABLISHMENTS, CAPACITY AND EMPLOYMENT						
<i>December quarter 1993—</i>						
Establishments	93	86	78	79	22	179
Guest rooms	3,510	1,832	1,440	2,455	1,447	5,342
Bed spaces	10,044	5,625	4,125	7,426	4,118	15,669
Employment (persons)	3,410	774	1,039	1,343	1,802	4,184
<i>December quarter 1994—</i>						
Establishments	92	85	74	80	23	177
Guest rooms	3,526	1,828	1,387	2,508	1,459	5,354
Bed spaces	9,921	5,674	3,948	7,441	4,206	15,595
Employment (persons)	3,576	815	1,007	1,376	2,008	4,391
ROOM NIGHTS OCCUPIED ('000)						
<i>December quarter 1993</i>	175.6	89.8	55.3	113.8	96.3	265.4
<i>1994—</i>						
October	59.2	32.0	17.6	42.3	31.2	91.2
November	62.7	34.1	18.6	44.3	33.9	96.9
December	55.6	28.6	16.8	35.6	31.8	84.3
<i>December quarter 1994</i>	177.6	94.8	53.1	122.3	97.0	272.4
ROOM OCCUPANCY RATES (per cent)						
<i>December quarter 1993</i>	54.4	53.3	41.7	50.4	72.4	54.0
<i>1994—</i>						
October	54.2	56.5	41.1	54.5	69.1	55.0
November	59.5	62.3	45.2	58.9	77.5	60.5
December	51.1	50.6	39.5	45.8	70.4	50.9
<i>December quarter 1994</i>	54.9	56.4	41.9	53.0	72.3	55.4
GUEST NIGHTS ('000)						
<i>December quarter 1993</i>	290.8	159.6	101.2	195.6	153.6	450.4
<i>1994—</i>						
October	98.9	58.8	32.2	75.8	49.7	157.7
November	101.8	63.0	34.2	77.4	53.2	164.8
December	101.6	53.8	33.8	65.2	56.4	155.4
<i>December quarter 1994</i>	302.3	175.7	100.2	218.4	159.4	477.9
BED OCCUPANCY RATES (per cent)						
<i>December quarter 1993</i>	31.5	30.8	26.7	28.6	40.5	31.2
<i>1994—</i>						
October	32.2	33.5	26.3	32.9	38.2	32.6
November	34.3	37.0	29.0	34.7	42.2	35.3
December	33.1	30.6	27.7	28.3	43.3	32.2
<i>December quarter 1994</i>	33.2	33.7	27.7	31.9	41.2	33.3
GUEST ARRIVALS ('000)						
<i>December quarter 1993</i>	158.9	90.8	63.8	114.4	71.6	249.7
<i>1994—</i>						
October	56.5	34.4	21.4	46.1	23.4	91.0
November	58.1	37.3	22.6	48.4	24.5	95.4
December	55.4	33.6	24.2	40.0	24.8	89.0
<i>December quarter 1994</i>	170.1	105.3	68.2	134.5	72.7	275.4
AVERAGE LENGTH OF STAY (days)						
<i>December quarter 1993</i>	1.8	1.8	1.6	1.7	2.1	1.8
<i>December quarter 1994</i>	1.8	1.7	1.5	1.6	2.2	1.7
TAKINGS FROM ACCOMMODATION (\$'000)						
<i>December quarter 1993</i>	13,366	3,294	2,918	6,627	9,115	18,661
<i>1994—</i>						
October	4,552	1,979	996	2,551	2,984	6,532
November	4,937	2,134	1,097	2,713	3,261	7,071
December	4,699	1,858	1,050	2,334	3,173	6,557
<i>December quarter 1994</i>	14,188	5,971	3,143	7,598	9,418	20,159

TABLE 5 — HOTELS, MOTELS AND GUEST HOUSES WITH FACILITIES BY STAR GRADING—continued
NORTHERN TERRITORY

Particulars	Licensed hotels with facilities	Motels and guest houses	Star grading					Ungraded	Total
			1	2	3	4 and 5			
ESTABLISHMENTS, CAPACITY AND EMPLOYMENT									
<i>December quarter 1993—</i>									
Establishments	29	63	14	38	21	5	14	92	
Guest rooms	1,997	3,285	344	1,791	1,863	987	297	5,282	
Bed spaces	5,626	9,483	1,017	5,113	5,433	2,711	835	15,109	
Employment (persons)	1,801	1,067	126	681	856	1,047	158	2,868	
<i>December quarter 1994—</i>									
Establishments	30	65	15	38	20	5	17	95	
Guest rooms	2,032	3,397	369	1,845	1,792	987	436	5,429	
Bed spaces	5,873	10,026	1,080	5,370	5,493	2,710	1,246	15,899	
Employment (persons)	1,952	1,095	168	750	845	1,095	189	3,047	
ROOM NIGHTS OCCUPIED ('000)									
<i>December quarter 1993</i>	106.1	141.1	14.6	70.5	98.2	53.1	10.7	247.2	
<i>1994—</i>									
October	48.0	67.4	5.6	32.8	44.0	26.2	6.7	115.4	
November	43.1	54.5	5.0	26.3	36.5	23.5	6.3	97.6	
December	31.5	40.7	3.9	18.9	27.4	16.6	5.5	72.2	
<i>December quarter 1994</i>	122.7	162.6	14.4	78.0	107.9	66.3	18.5	285.2	
ROOM OCCUPANCY RATES (per cent)									
<i>December quarter 1993</i>	57.7	46.7	46.0	42.8	57.3	58.5	39.6	50.9	
<i>1994—</i>									
October	76.2	64.0	48.8	57.4	79.3	85.8	49.8	68.6	
November	70.7	53.5	44.8	47.6	67.9	79.3	48.1	59.9	
December	50.1	38.6	33.9	33.0	49.3	54.2	40.8	42.9	
<i>December quarter 1994</i>	65.6	52.0	42.5	46.0	65.5	73.0	46.2	57.1	
GUEST NIGHTS ('000)									
<i>December quarter 1993</i>	171.7	237.8	26.7	119.7	163.9	83.0	16.3	409.5	
<i>1994—</i>									
October	78.7	117.8	9.7	57.4	75.4	42.3	11.7	196.5	
November	69.5	91.3	8.3	43.8	61.1	37.3	10.2	160.7	
December	52.5	73.2	7.3	33.6	48.3	26.7	9.8	125.7	
<i>December quarter 1994</i>	200.6	282.3	25.3	134.8	184.8	106.3	31.7	482.9	
BED OCCUPANCY RATES (per cent)									
<i>December quarter 1993</i>	33.2	27.3	28.5	25.4	32.8	33.3	21.4	29.5	
<i>1994—</i>									
October	43.2	37.9	28.9	34.5	44.3	50.3	30.3	39.9	
November	39.4	30.3	25.6	27.2	37.1	45.9	27.3	33.7	
December	28.8	23.6	21.9	20.2	28.3	31.8	25.4	25.5	
<i>December quarter 1994</i>	37.1	30.6	25.4	27.3	36.6	42.6	27.7	33.0	
GUEST ARRIVALS ('000)									
<i>December quarter 1993</i>	88.0	117.8	11.8	62.5	80.6	41.8	9.2	205.8	
<i>1994—</i>									
October	39.9	54.5	5.3	26.1	33.5	23.8	5.8	94.4	
November	34.5	41.8	3.9	19.6	28.0	20.4	4.4	76.2	
December	25.6	35.7	4.2	17.8	20.8	14.3	4.2	61.3	
<i>December quarter 1994</i>	100.0	131.9	13.3	63.5	82.3	58.5	14.3	231.9	
AVERAGE LENGTH OF STAY (days)									
<i>December quarter 1993</i>	2.0	2.0	2.3	1.9	2.0	2.0	1.8	2.0	
<i>December quarter 1994</i>	2.0	2.1	1.9	2.1	2.2	1.8	2.2	2.1	
TAKINGS FROM ACCOMMODATION (\$'000)									
<i>December quarter 1993</i>	10,470	9,027	527	4,016	8,269	6,086	599	19,496	
<i>1994—</i>									
October	5,001	4,697	279	2,127	3,831	3,096	365	9,698	
November	4,268	3,677	229	1,538	3,155	2,684	339	7,945	
December	3,127	2,705	177	1,106	2,354	1,886	309	5,832	
<i>December quarter 1994</i>	12,396	11,078	685	4,770	9,340	7,666	1,013	23,474	

TABLE 5 — HOTELS, MOTELS AND GUEST HOUSES WITH FACILITIES BY STAR GRADING—*continued*
AUSTRALIAN CAPITAL TERRITORY

Particulars	Licensed hotels with facilities	Motels and guest houses	Star grading			Total
			1, 2 and ungraded	3	4 and 5	
ESTABLISHMENTS, CAPACITY AND EMPLOYMENT						
<i>December quarter 1993—</i>						
Establishments	13	29	12	23	7	42
Guest rooms	1,665	1,819	612	1,702	1,170	3,484
Bed spaces	4,352	5,811	1,867	5,114	3,182	10,163
Employment (persons)	1,400	591	203	665	1,123	1,991
<i>December quarter 1994—</i>						
Establishments	13	31	11	24	9	44
Guest rooms	1,671	1,870	452	1,841	1,248	3,541
Bed spaces	4,452	6,013	1,584	5,436	3,445	10,465
Employment (persons)	1,421	604	110	790	1,125	2,025
ROOM NIGHTS OCCUPIED ('000)						
<i>December quarter 1993</i>	109.1	106.5	34.2	97.2	84.1	215.6
<i>1994—</i>						
October	39.8	42.0	9.1	40.6	32.1	81.8
November	38.7	36.1	7.7	37.2	29.9	74.8
December	31.0	28.2	6.4	27.9	25.0	59.2
<i>December quarter 1994</i>	109.5	106.3	23.2	105.6	87.0	215.8
ROOM OCCUPANCY RATES (per cent)						
<i>December quarter 1993</i>	71.2	63.6	60.8	62.1	78.1	67.3
<i>1994—</i>						
October	76.7	72.5	65.0	71.1	82.9	74.5
November	77.3	64.3	56.7	67.3	80.0	70.4
December	59.9	48.6	45.7	48.9	64.5	54.0
<i>December quarter 1994</i>	71.3	61.8	55.8	62.4	75.8	66.2
GUEST NIGHTS ('000)						
<i>December quarter 1993</i>	169.9	198.2	69.7	169.6	128.8	368.1
<i>1994—</i>						
October	63.4	76.6	19.7	70.1	50.3	140.1
November	56.4	61.4	15.3	60.0	42.5	117.8
December	47.7	55.1	15.0	50.0	37.7	102.7
<i>December quarter 1994</i>	167.5	193.1	50.0	180.1	130.5	360.6
BED OCCUPANCY RATES (per cent)						
<i>December quarter 1993</i>	42.4	37.1	40.6	36.0	44.0	39.4
<i>1994—</i>						
October	46.0	41.1	40.0	41.6	47.1	43.2
November	42.2	34.0	32.3	36.8	41.1	37.5
December	34.5	29.5	30.6	29.7	35.3	31.7
<i>December quarter 1994</i>	40.9	34.9	34.3	36.0	41.2	37.5
GUEST ARRIVALS ('000)						
<i>December quarter 1993</i>	93.8	91.1	28.1	82.5	74.3	184.9
<i>1994—</i>						
October	32.1	35.5	9.5	35.2	22.9	67.6
November	31.5	29.2	7.7	31.1	21.9	60.8
December	25.5	25.5	7.2	25.8	18.1	51.0
<i>December quarter 1994</i>	89.1	90.2	24.4	92.1	62.8	179.3
AVERAGE LENGTH OF STAY (days)						
<i>December quarter 1993</i>	1.8	2.2	2.5	2.1	1.7	2.0
<i>December quarter 1994</i>	1.9	2.1	2.1	2.0	2.1	2.0
TAKINGS FROM ACCOMMODATION (\$'000)						
<i>December quarter 1993</i>	11,001	7,263	1,958	7,352	8,953	18,263
<i>1994—</i>						
October	3,989	2,907	564	2,947	3,385	6,896
November	4,026	2,493	453	2,713	3,354	6,519
December	3,011	2,021	421	2,063	2,548	5,032
<i>December quarter 1994</i>	11,026	7,421	1,438	7,722	9,286	18,447

TABLE 5 — HOTELS, MOTELS AND GUEST HOUSES WITH FACILITIES BY STAR GRADING—continued
AUSTRALIA

Particulars	Licensed hotels with facilities	Motels and guest houses	Star grading					Ungraded	Total
			1	2	3	4	5		
ESTABLISHMENTS, CAPACITY AND EMPLOYMENT									
<i>December quarter 1993</i>									
Establishments	1,138	3,694	119	1,777	1,962	299	61	614	4,832
Guest rooms	66,517	100,226	1,851	37,633	65,750	30,281	18,144	13,084	166,743
Bed spaces	175,476	302,890	4,804	109,868	195,935	86,931	43,931	36,897	478,366
Employment (persons)	65,735	36,843	1,223	17,223	29,435	24,050	22,239	8,408	102,578
<i>December quarter 1994</i>									
Establishments	1,135	3,684	116	1,681	2,084	313	56	569	4,819
Guest rooms	66,898	100,065	2,053	34,823	69,405	31,461	15,936	13,285	166,963
Bed spaces	179,221	303,251	5,647	101,511	207,489	91,253	39,425	37,147	482,472
Employment (persons)	67,737	37,495	1,369	16,244	31,607	28,260	18,580	9,172	105,232
ROOM NIGHTS OCCUPIED ('000)									
<i>December quarter 1993</i>									
	3,725.3	4,777.8	60.9	1,500.6	3,366.2	1,900.3	1,198.5	476.7	8,503.1
<i>1994—</i>									
October	1,424.7	1,864.2	23.7	534.7	1,378.3	752.3	402.9	197.1	3,288.9
November	1,391.5	1,659.0	21.7	460.8	1,248.4	732.7	404.6	182.3	3,050.6
December	1,230.1	1,481.6	19.8	425.0	1,093.5	653.3	354.1	166.0	2,711.7
<i>December quarter 1994</i>									
	4,046.4	5,004.8	65.2	1,420.5	3,720.2	2,138.3	1,161.6	545.4	9,051.2
ROOM OCCUPANCY RATES (per cent)									
<i>December quarter 1993</i>									
	61.0	51.9	35.8	43.6	55.7	68.2	71.8	39.7	55.5
<i>1994—</i>									
October	68.8	60.1	37.2	49.6	64.1	77.2	81.6	48.0	63.6
November	69.4	55.3	35.5	44.2	60.0	77.7	84.6	46.0	61.0
December	59.4	47.8	31.3	39.4	50.8	67.0	71.7	40.4	52.4
<i>December quarter 1994</i>									
	65.8	54.4	34.7	44.4	58.3	73.9	79.2	44.8	59.0
GUEST NIGHTS ('000)									
<i>December quarter 1993</i>									
	6,261.5	8,755.5	101.3	2,687.3	6,100.5	3,292.8	1,999.2	835.9	15,017.0
<i>1994—</i>									
October	2,361.1	3,398.8	42.0	959.4	2,488.0	1,284.4	636.7	349.3	5,759.9
November	2,220.1	2,863.3	36.6	782.6	2,129.9	1,205.9	619.4	308.9	5,083.4
December	2,148.5	2,865.1	36.2	801.2	2,090.9	1,185.4	599.1	300.8	5,013.6
<i>December quarter 1994</i>									
	6,729.7	9,127.2	114.8	2,543.2	6,708.9	3,675.7	1,855.3	959.1	15,856.9
BED OCCUPANCY RATES (per cent)									
<i>December quarter 1993</i>									
	39.0	31.5	22.9	26.8	33.9	41.2	49.5	24.7	34.2
<i>1994—</i>									
October	42.5	36.2	24.0	30.5	38.7	45.4	52.1	30.5	38.5
November	41.3	31.5	21.7	25.7	34.2	44.1	52.4	27.9	35.2
December	38.7	30.5	20.7	25.5	32.5	41.9	49.0	26.2	33.5
<i>December quarter 1994</i>									
	40.8	32.7	22.2	27.3	35.2	43.8	51.1	28.2	35.8
GUEST ARRIVALS ('000)									
<i>December quarter 1993</i>									
	2,715.2	4,712.8	51.5	1,553.8	3,240.3	1,420.4	771.0	391.1	7,428.1
<i>1994—</i>									
October	1,009.0	1,828.4	22.4	549.3	1,297.5	535.7	278.7	153.9	2,837.5
November	981.6	1,523.5	18.1	448.4	1,108.0	522.6	272.4	135.6	2,505.1
December	933.5	1,545.5	18.7	472.6	1,098.9	499.4	254.2	135.2	2,479.0
<i>December quarter 1994</i>									
	2,924.1	4,897.4	59.1	1,470.3	3,504.3	1,557.7	805.3	424.8	7,821.5
AVERAGE LENGTH OF STAY (days)									
<i>December quarter 1993</i>									
	2.3	1.9	2.0	1.7	1.9	2.3	2.6	2.1	2.0
<i>December quarter 1994</i>									
	2.3	1.9	1.9	1.7	1.9	2.4	2.3	2.3	2.0
TAKINGS FROM ACCOMMODATION (\$'000)									
<i>December quarter 1993</i>									
	391,787	317,754	2,487	73,623	231,414	194,997	173,735	33,284	709,542
<i>1994—</i>									
October	157,514	127,718	1,092	27,319	98,719	81,829	60,655	15,617	285,231
November	155,932	113,881	933	23,270	89,047	80,125	62,006	14,432	269,813
December	137,013	104,853	875	22,306	80,377	71,397	53,697	13,215	241,865
<i>December quarter 1994</i>									
	450,458	346,451	2,899	72,895	268,143	233,351	176,358	43,263	796,910

TABLE 6 — HOLIDAY FLATS, UNITS AND HOUSES BY STATE/TERRITORY, AUSTRALIA

Particulars	New South Wales	Victoria	Queensland	South Australia	Western Australia	Tasmania	Northern Territory	Australian Capital Territory	Australia
LETTING ENTITIES, CAPACITY AND EMPLOYMENT									
<i>December quarter 1993</i>									
Letting entities	409	204	611	87	107	50	10	15	1,493
Flats, units and houses									
Single bedroom	1,983	1,032	3,512	360	563	257	143	136	7,986
Multiple bedroom	8,457	2,314	13,096	1,017	1,627	514	108	367	27,500
<i>Total flats, units and houses</i>	<i>10,440</i>	<i>3,346</i>	<i>16,608</i>	<i>1,377</i>	<i>2,190</i>	<i>771</i>	<i>251</i>	<i>503</i>	<i>35,486</i>
Bed spaces	48,817	15,205	66,574	6,865	10,378	3,366	1,027	1,871	154,103
Employment (persons) (a)	1,105	676	2,160	266	474	325	63	86	5,155
<i>December quarter 1994</i>									
Letting entities	411	200	651	90	106	52	8	17	1,535
Flats, units and houses									
Single bedroom	2,036	1,042	3,561	318	604	265	126	189	8,141
Multiple bedroom	8,723	2,263	14,469	1,042	1,698	551	97	550	29,393
<i>Total flats, units and houses</i>	<i>10,759</i>	<i>3,305</i>	<i>18,030</i>	<i>1,360</i>	<i>2,302</i>	<i>816</i>	<i>223</i>	<i>739</i>	<i>37,534</i>
Bed spaces	50,408	14,573	73,510	6,900	10,901	3,578	891	2,825	163,586
Employment (persons) (a)	1,151	730	2,435	244	520	339	46	137	5,602
UNIT NIGHTS OCCUPIED ('000)									
<i>December quarter 1993</i>	<i>392.8</i>	<i>118.8</i>	<i>902.0</i>	<i>52.6</i>	<i>113.2</i>	<i>38.0</i>	<i>13.7</i>	<i>32.6</i>	<i>1,663.6</i>
<i>1994—</i>									
October	135.1	45.9	351.7	17.8	47.2	14.8	4.6	14.6	631.7
November	125.7	42.1	296.8	14.9	38.2	14.7	4.2	14.0	550.5
December	161.4	43.4	336.7	16.8	43.0	13.4	3.9	13.7	632.2
<i>December quarter 1994</i>	<i>422.2</i>	<i>131.5</i>	<i>985.1</i>	<i>49.5</i>	<i>128.4</i>	<i>42.8</i>	<i>12.6</i>	<i>42.4</i>	<i>1,814.4</i>
UNIT OCCUPANCY RATES (per cent)									
<i>December quarter 1993</i>	<i>41.0</i>	<i>38.9</i>	<i>59.1</i>	<i>41.6</i>	<i>56.2</i>	<i>53.5</i>	<i>60.5</i>	<i>70.4</i>	<i>51.1</i>
<i>1994—</i>									
October	40.5	44.8	63.0	42.3	66.1	58.4	66.1	64.0	54.3
November	39.0	42.5	55.0	37.0	55.3	59.9	62.0	63.3	49.0
December	48.4	42.4	60.3	40.7	60.3	52.8	55.8	59.9	54.4
<i>December quarter 1994</i>	<i>42.7</i>	<i>43.2</i>	<i>59.5</i>	<i>40.0</i>	<i>60.6</i>	<i>57.0</i>	<i>61.3</i>	<i>62.4</i>	<i>52.6</i>
UNIT LETTINGS ('000)									
<i>December quarter 1993</i>	<i>70.7</i>	<i>32.0</i>	<i>147.5</i>	<i>10.4</i>	<i>25.6</i>	<i>18.1</i>	<i>3.8</i>	<i>4.8</i>	<i>312.9</i>
<i>1994—</i>									
October	27.2	11.3	61.0	4.0	10.5	7.1	1.1	2.5	124.7
November	24.9	10.4	50.9	3.2	9.4	7.3	0.9	2.3	109.3
December	31.5	9.9	55.4	3.3	9.7	6.8	0.9	2.4	119.8
<i>December quarter 1994</i>	<i>83.6</i>	<i>31.6</i>	<i>167.3</i>	<i>10.4</i>	<i>29.6</i>	<i>21.2</i>	<i>2.9</i>	<i>7.2</i>	<i>353.8</i>
AVERAGE LENGTH OF STAY (days)									
<i>December quarter 1993</i>	<i>5.6</i>	<i>3.7</i>	<i>6.1</i>	<i>5.1</i>	<i>4.4</i>	<i>2.1</i>	<i>3.6</i>	<i>6.7</i>	<i>5.3</i>
<i>1994—</i>									
October	5.0	4.1	5.8	4.5	4.5	2.1	4.1	5.9	5.1
November	5.0	4.1	5.8	4.7	4.1	2.0	4.4	6.1	5.0
December	5.1	4.4	6.1	5.1	4.4	2.0	4.4	5.7	5.3
<i>December quarter 1994</i>	<i>5.0</i>	<i>4.2</i>	<i>5.9</i>	<i>4.7</i>	<i>4.3</i>	<i>2.0</i>	<i>4.3</i>	<i>5.9</i>	<i>5.1</i>
TAKINGS FROM ACCOMMODATION (\$'000)									
<i>December quarter 1993</i>	<i>23,450</i>	<i>8,884</i>	<i>54,078</i>	<i>3,290</i>	<i>6,915</i>	<i>2,450</i>	<i>971</i>	<i>2,659</i>	<i>102,697</i>
<i>1994—</i>									
October	7,660	3,661	22,329	1,015	2,914	1,017	341	1,181	40,118
November	7,253	3,344	18,141	942	2,519	999	226	1,120	34,543
December	11,396	3,456	24,551	1,043	2,924	1,020	223	1,140	45,751
<i>December quarter 1994</i>	<i>26,309</i>	<i>10,461</i>	<i>65,020</i>	<i>3,000</i>	<i>8,357</i>	<i>3,036</i>	<i>789</i>	<i>3,441</i>	<i>120,412</i>

(a) Employment numbers exclude real estate agents and their employees.

TABLE 7—CARAVAN PARKS BY TYPE AND BY STATE/TERRITORY, AUSTRALIA

Particulars	New South Wales			Victoria			Queensland		
	Short-term	Long-term	Total	Short-term	Long-term	Total	Short-term	Long-term	Total
ESTABLISHMENTS, CAPACITY AND EMPLOYMENT									
<i>December quarter 1993—</i>									
Establishments	471	327	798	442	159	601	231	398	629
Capacity									
On-site vans	3,285	3,621	6,906	2,046	1,913	3,959	1,080	4,728	5,808
Other powered sites	42,805	20,599	63,404	36,246	8,689	44,935	10,792	21,835	32,627
Unpowered sites	16,010	4,986	20,996	13,064	2,066	15,130	8,390	5,413	13,803
Cabins, flats, etc.	2,835	1,861	4,696	2,245	908	3,153	1,207	2,237	3,444
<i>Total capacity</i>	<i>64,935</i>	<i>31,067</i>	<i>96,002</i>	<i>53,601</i>	<i>13,576</i>	<i>67,177</i>	<i>21,469</i>	<i>34,213</i>	<i>55,682</i>
Sites occupied by long-term guests	3,504	12,309	15,813	1,854	4,637	6,491	1,752	14,687	16,439
Other sites permanently reserved	21,902	1,257	23,159	14,425	405	14,830	684	502	1,186
Employment (persons)	1,891	1,227	3,118	1,487	510	1,997	811	1,372	2,183
<i>December quarter 1994—</i>									
Establishments	481	312	793	436	164	600	238	393	631
Capacity									
On-site vans	3,361	3,467	6,828	2,075	1,904	3,979	1,058	4,704	5,762
Other powered sites	42,983	20,062	63,045	36,263	8,618	44,881	10,798	21,644	32,442
Unpowered sites	15,593	4,693	20,286	12,680	2,172	14,852	7,936	4,975	12,911
Cabins, flats, etc.	3,050	1,963	5,013	2,359	1,142	3,501	1,313	2,404	3,717
<i>Total capacity</i>	<i>64,987</i>	<i>30,185</i>	<i>95,172</i>	<i>53,377</i>	<i>13,836</i>	<i>67,213</i>	<i>21,105</i>	<i>33,727</i>	<i>54,832</i>
Sites occupied by long-term guests	3,620	12,065	15,685	1,716	4,750	6,466	1,744	14,382	16,126
Other sites permanently reserved	22,027	1,125	23,152	14,850	340	15,190	723	480	1,203
Employment (persons)	2,092	1,171	3,263	1,477	512	1,989	888	1,368	2,256
SITE NIGHTS OCCUPIED ('000)									
<i>December quarter 1993</i>	<i>3,089.1</i>	<i>1,496.0</i>	<i>4,585.1</i>	<i>1,899.3</i>	<i>550.4</i>	<i>2,449.8</i>	<i>565.4</i>	<i>1,659.1</i>	<i>2,224.5</i>
<i>1994—</i>									
October	1,021.3	478.4	1,499.7	610.1	188.1	798.2	194.7	558.8	753.5
November	969.0	458.7	1,427.7	596.8	184.1	780.9	171.3	531.0	702.3
December	1,134.7	500.7	1,635.4	739.8	192.7	932.5	210.2	556.7	766.9
<i>December quarter 1994</i>	<i>3,125.0</i>	<i>1,437.8</i>	<i>4,562.8</i>	<i>1,946.8</i>	<i>564.9</i>	<i>2,511.7</i>	<i>576.2</i>	<i>1,646.6</i>	<i>2,222.8</i>
SITE OCCUPANCY RATES (per cent)									
<i>December quarter 1993</i>	<i>52.4</i>	<i>52.5</i>	<i>52.4</i>	<i>38.7</i>	<i>44.1</i>	<i>39.8</i>	<i>28.7</i>	<i>52.7</i>	<i>43.4</i>
<i>1994—</i>									
October	50.7	51.1	50.8	36.9	43.9	38.3	29.9	53.4	44.4
November	49.7	50.7	50.0	37.3	44.3	38.7	27.1	52.5	42.7
December	56.3	53.5	55.4	44.7	44.9	44.8	32.1	53.3	45.1
<i>December quarter 1994</i>	<i>52.3</i>	<i>51.8</i>	<i>52.1</i>	<i>39.6</i>	<i>44.4</i>	<i>40.6</i>	<i>29.7</i>	<i>53.1</i>	<i>44.1</i>
TAKINGS FROM ACCOMMODATION (\$'000)									
<i>December quarter 1993</i>	<i>27,967</i>	<i>16,162</i>	<i>44,129</i>	<i>13,469</i>	<i>5,628</i>	<i>19,096</i>	<i>6,953</i>	<i>15,979</i>	<i>22,931</i>
<i>1994</i>									
October	9,035	5,302	14,337	4,650	1,987	6,638	2,448	5,564	8,012
November	7,960	4,873	12,833	4,009	1,914	5,924	2,132	5,191	7,323
December	12,693	5,998	18,692	5,843	2,104	7,947	2,641	5,749	8,391
<i>December quarter 1994</i>	<i>29,689</i>	<i>16,173</i>	<i>45,862</i>	<i>14,503</i>	<i>6,006</i>	<i>20,509</i>	<i>7,221</i>	<i>16,504</i>	<i>23,725</i>

TABLE 7—CARAVAN PARKS BY TYPE AND BY STATE/TERRITORY, AUSTRALIA—continued

Particulars	South Australia			Western Australia			Tasmania		
	Short-term	Long-term	Total	Short-term	Long-term	Total	Short-term	Long-term	Total
ESTABLISHMENTS, CAPACITY AND EMPLOYMENT									
<i>December quarter 1993—</i>									
Establishments	167	44	211	199	113	312	56	12	68
Capacity									
On-site vans	939	252	1,191	1,167	1,070	2,237	274	120	394
Other powered sites	11,994	2,836	14,830	11,657	7,391	19,048	2,782	524	3,306
Unpowered sites	5,736	1,046	6,782	4,005	1,900	5,905	2,083	240	2,323
Cabins, flats, etc.	1,256	389	1,645	838	564	1,402	306	96	402
<i>Total capacity</i>	<i>19,925</i>	<i>4,523</i>	<i>24,448</i>	<i>17,667</i>	<i>10,925</i>	<i>28,592</i>	<i>5,445</i>	<i>980</i>	<i>6,425</i>
Sites occupied by long-term guests	585	1,364	1,949	1,175	3,698	4,873	210	195	405
Other sites permanently reserved	1,467	29	1,496	1,974	259	2,233	875	17	892
Employment (persons)	593	156	749	696	388	1,084	183	41	224
<i>December quarter 1994—</i>									
Establishments	172	43	215	207	108	315	63	12	75
Capacity									
On-site vans	890	272	1,162	1,122	1,173	2,295	276	112	388
Other powered sites	12,062	2,731	14,793	12,324	7,309	19,633	3,095	508	3,603
Unpowered sites	5,757	883	6,640	4,039	2,114	6,153	2,266	238	2,504
Cabins, flats, etc.	1,417	329	1,746	971	573	1,544	362	96	458
<i>Total capacity</i>	<i>20,126</i>	<i>4,215</i>	<i>24,341</i>	<i>18,456</i>	<i>11,169</i>	<i>29,625</i>	<i>5,999</i>	<i>954</i>	<i>6,953</i>
Sites occupied by long-term guests	708	1,395	2,103	1,224	3,733	4,957	273	188	461
Other sites permanently reserved	1,547	20	1,567	2,116	189	2,305	986	20	1,006
Employment (persons)	621	144	765	729	393	1,122	219	47	266
SITE NIGHTS OCCUPIED ('000)									
<i>December quarter 1993</i>	<i>427.3</i>	<i>155.4</i>	<i>582.7</i>	<i>514.5</i>	<i>447.8</i>	<i>962.3</i>	<i>148.2</i>	<i>29.5</i>	<i>177.7</i>
<i>1994—</i>									
October	159.0	51.9	210.9	191.3	162.6	354.0	51.8	8.4	60.2
November	131.1	50.0	181.1	160.3	146.4	306.7	53.5	8.7	62.2
December	164.4	53.9	218.3	188.2	154.4	342.6	63.7	8.7	72.4
<i>December quarter 1994</i>	<i>454.4</i>	<i>155.8</i>	<i>610.2</i>	<i>539.9</i>	<i>463.4</i>	<i>1,003.3</i>	<i>169.0</i>	<i>25.7</i>	<i>194.7</i>
SITE OCCUPANCY RATES (per cent)									
<i>December quarter 1993</i>	<i>23.4</i>	<i>37.3</i>	<i>26.0</i>	<i>31.7</i>	<i>44.6</i>	<i>36.6</i>	<i>29.6</i>	<i>32.7</i>	<i>30.1</i>
<i>1994—</i>									
October	25.5	39.7	27.9	33.4	47.0	38.5	27.9	28.3	27.9
November	21.7	39.6	24.8	29.0	43.7	34.5	29.7	30.3	29.8
December	26.3	41.2	28.9	32.9	44.6	37.3	34.2	29.5	33.6
<i>December quarter 1994</i>	<i>24.5</i>	<i>40.2</i>	<i>27.2</i>	<i>31.8</i>	<i>45.1</i>	<i>36.8</i>	<i>30.6</i>	<i>29.3</i>	<i>30.4</i>
TAKINGS FROM ACCOMMODATION (\$'000)									
<i>December quarter 1993</i>	<i>5,370</i>	<i>1,549</i>	<i>6,918</i>	<i>5,796</i>	<i>5,245</i>	<i>11,041</i>	<i>1,174</i>	<i>415</i>	<i>1,589</i>
<i>1994—</i>									
October	2,038	495	2,533	2,224	1,924	4,148	419	105	525
November	1,529	471	2,000	1,718	1,743	3,462	483	106	589
December	2,114	549	2,664	2,539	1,840	4,379	603	102	704
<i>December quarter 1994</i>	<i>5,681</i>	<i>1,516</i>	<i>7,197</i>	<i>6,481</i>	<i>5,508</i>	<i>11,989</i>	<i>1,505</i>	<i>313</i>	<i>1,818</i>

TABLE 7 — CARAVAN PARKS BY TYPE AND BY STATE/TERRITORY, AUSTRALIA—continued

Particulars	Northern Territory		Australian Capital Territory		Australia		
	Short-term	Long-term	Total	Total	Short-term	Long-term	Total
ESTABLISHMENTS, CAPACITY AND EMPLOYMENT							
<i>December quarter 1993—</i>							
Establishments	55	25	80	5	1,621	1,083	2,704
Capacity							
On-site vans	65	249	314	150	8,856	12,103	20,959
Other powered sites	2,553	1,902	4,455	495	118,829	64,271	183,100
Unpowered sites	3,127	785	3,912	419	52,415	16,855	69,270
Cabins, flats, etc.	147	72	219	10	8,834	6,137	14,971
<i>Total capacity</i>	<i>5,892</i>	<i>3,008</i>	<i>8,900</i>	<i>1,074</i>	<i>188,934</i>	<i>99,366</i>	<i>288,300</i>
Sites occupied by long-term guests	182	871	1,053	304	9,262	38,065	47,327
Other sites permanently reserved	3	5	8	—	41,330	2,474	43,804
Employment (persons)	206	89	295	44	5,867	3,827	9,694
<i>December quarter 1994—</i>							
Establishments	62	20	82	5	1,659	1,057	2,716
Capacity							
On-site vans	119	206	325	150	8,901	11,988	20,889
Other powered sites	2,981	1,565	4,546	495	120,506	62,932	183,438
Unpowered sites	3,445	636	4,081	419	51,716	16,130	67,846
Cabins, flats, etc.	179	78	257	10	9,651	6,595	16,246
<i>Total capacity</i>	<i>6,724</i>	<i>2,485</i>	<i>9,209</i>	<i>1,074</i>	<i>190,774</i>	<i>97,645</i>	<i>288,419</i>
Sites occupied by long-term guests	290	770	1,060	301	9,575	37,584	47,159
Other sites permanently reserved	2	3	5	—	42,251	2,177	44,428
Employment (persons)	222	73	295	44	6,248	3,752	10,000
SITE NIGHTS OCCUPIED ('000)							
<i>December quarter 1993</i>	<i>65.7</i>	<i>102.8</i>	<i>168.5</i>	<i>45.8</i>	<i>6,709.4</i>	<i>4,486.9</i>	<i>11,196.3</i>
<i>1994—</i>							
October	41.2	31.9	73.1	14.6	2,269.5	1,494.6	3,764.2
November	26.2	27.5	53.7	13.5	2,108.2	1,419.9	3,528.1
December	21.0	27.2	48.3	13.2	2,522.0	1,507.6	4,029.6
<i>December quarter 1994</i>	<i>88.5</i>	<i>86.6</i>	<i>175.1</i>	<i>41.3</i>	<i>6,899.8</i>	<i>4,422.1</i>	<i>11,321.9</i>
SITE OCCUPANCY RATES (per cent)							
<i>December quarter 1993</i>	<i>12.1</i>	<i>37.1</i>	<i>20.6</i>	<i>46.4</i>	<i>38.8</i>	<i>49.1</i>	<i>42.4</i>
<i>1994—</i>							
October	19.8	41.4	25.6	43.9	38.4	49.4	42.1
November	13.0	36.9	19.4	41.9	36.8	48.5	40.8
December	10.1	35.3	16.9	39.7	42.6	49.8	45.1
<i>December quarter 1994</i>	<i>14.3</i>	<i>37.9</i>	<i>20.7</i>	<i>41.8</i>	<i>39.3</i>	<i>49.2</i>	<i>42.7</i>
TAKINGS FROM ACCOMMODATION (\$'000)							
<i>December quarter 1993</i>	<i>949</i>	<i>1,019</i>	<i>1,969</i>	<i>831</i>	<i>61,678</i>	<i>46,827</i>	<i>108,504</i>
<i>1994—</i>							
October	600	316	916	288	21,414	15,982	37,396
November	375	263	638	234	18,207	14,795	33,002
December	309	263	573	234	26,743	16,840	43,583
<i>December quarter 1994</i>	<i>1,284</i>	<i>842</i>	<i>2,126</i>	<i>756</i>	<i>66,364</i>	<i>47,617</i>	<i>113,981</i>

TABLE 8 — VISITOR HOSTELS BY STATE/TERRITORY, AUSTRALIA

Particulars	New South Wales (a)	Victoria	Queensland	South Australia	Western Australia	Tasmania	Northern Territory	Australia
ESTABLISHMENTS, CAPACITY AND EMPLOYMENT								
<i>December quarter 1993—</i>								
Establishments	78	45	118	42	54	38	39	414
Bed spaces	5,026	2,576	7,863	2,037	2,993	1,471	2,994	24,960
Employment (persons)	300	150	543	123	138	94	160	1,508
<i>December quarter 1994</i>								
Establishments	88	51	118	42	55	44	35	433
Bed spaces	5,774	2,825	7,978	2,075	2,858	1,813	2,740	26,063
Employment (persons)	327	160	585	136	148	112	134	1,602
GUEST NIGHTS ('000)								
<i>December quarter 1993</i>	258.7	92.7	339.2	59.3	103.8	18.9	116.6	989.3
<i>1994—</i>								
October	100.6	31.3	118.5	18.7	34.2	7.0	43.6	353.8
November	105.2	34.7	117.1	21.2	34.8	8.9	36.8	358.7
December	115.0	36.9	117.1	20.7	36.8	12.5	29.0	368.2
<i>December quarter 1994</i>	320.8	102.9	352.7	60.6	105.9	28.4	109.4	1,080.7
BED OCCUPANCY RATES (per cent)								
<i>December quarter 1993</i>	56.5	39.1	47.1	31.6	37.7	14.0	42.3	43.2
<i>1994—</i>								
October	56.2	35.8	47.9	29.3	38.6	12.5	51.3	43.9
November	60.7	41.0	48.9	34.4	40.6	16.4	44.8	45.9
December	64.3	42.1	47.4	32.4	41.6	22.3	34.2	45.6
<i>December quarter 1994</i>	60.4	39.6	48.1	32.0	40.3	17.1	43.4	45.1
GUEST ARRIVALS ('000)								
<i>December quarter 1993</i>	73.3	36.7	124.6	27.6	37.9	13.4	50.8	364.3
<i>1994—</i>								
October	30.6	13.6	41.4	9.5	12.3	4.4	20.0	131.8
November	31.5	14.7	42.6	9.5	13.0	5.4	18.0	134.7
December	35.2	15.0	42.9	9.6	14.8	7.2	13.3	138.1
<i>December quarter 1994</i>	97.3	43.3	126.9	28.6	40.1	17.1	51.2	404.6
AVERAGE LENGTH OF STAY (days)								
<i>December quarter 1993</i>	3.5	2.5	2.7	2.1	2.7	1.4	2.3	2.7
<i>1994—</i>								
October	3.3	2.3	2.9	2.0	2.8	1.6	2.2	2.7
November	3.3	2.4	2.8	2.2	2.7	1.6	2.0	2.7
December	3.3	2.5	2.7	2.2	2.5	1.7	2.2	2.7
<i>December quarter 1994</i>	3.3	2.4	2.8	2.1	2.6	1.7	2.1	2.7
TAKINGS FROM ACCOMMODATION (\$'000)								
<i>December quarter 1993</i>	3,406	1,144	3,782	638	1,073	215	1,436	11,694
<i>1994—</i>								
October	1,379	393	1,409	180	380	92	547	4,380
November	1,436	449	1,484	229	391	120	474	4,583
December	1,538	468	1,459	213	412	164	373	4,627
<i>December quarter 1994</i>	4,353	1,310	4,352	622	1,183	377	1,394	13,590

(a) Including Australian Capital Territory establishments.

EXPLANATORY NOTES

INTRODUCTION

1 This publication contains data, for Australia and each State and Territory, from a quarterly survey of tourist accommodation establishments. The period covered by the latest survey is the 3 months ended 31 December 1994.

SCOPE

2 Tourist accommodation establishments currently included in the survey comprise two groups:

- Establishments which provide predominantly short-term accommodation (i.e. for periods of less than 2 months) to the general public. These include:

Hotels, motels and guest houses, with facilities being hotels licensed to operate a public bar and motels, private hotels and guest houses all of which provide a bath (or shower) and toilet in most guest rooms and have breakfast available for guests.

NOTE: From December quarter 1993, hotel, motel and guest house establishments with fewer than five rooms have been formally excluded from the scope of this statistical collection. This change in scope resulted in the exclusion of 95 establishments which in the September quarter 1993 Survey aggregates for Australia represented 1.9 per cent of hotel, motel and guest house establishments but accounted for only 0.2 per cent of accommodation capacity and less than 0.1 per cent of occupancy and takings.

Holiday flats, units and houses (excluding establishments predominantly operated on a time share basis) which are operated by owners or managers who have sole letting rights to at least five flats, units or houses or by real estate agents for short-term letting. They are mainly self-contained in terms of cooking, bath (or shower) and toilet facilities and do not have breakfast available for guests. Data for holiday flats, units and houses include short-term owner occupation as well as paying guest occupation.

Visitor hostels which provide accommodation to visitors on a bed basis (rather than by the room). This category does not include establishments providing charity type accommodation (e.g. Salvation Army hostels) nor hotels, motels and guest houses without in-room facilities which provide accommodation on a per room basis.

- *Caravan parks* which provide either predominantly short-term (i.e. for periods of less than 2 months) or predominantly long-term (i.e. for periods of 2 months or more) accommodation to the general public and which provide powered sites for caravans and toilet, shower and laundry facilities for guests.

3 Data collected and published for each type of establishment (other than holiday flats, units and houses) include both long-term and short-term guests at these establishments.

4 Establishments which provide more than one type of accommodation (e.g. a motel with attached caravan park) are treated as two or more separate establishments. However, self-contained units, flats, cabins, etc. attached to hotels, motels or to caravan parks are included in the capacity for those establishments and not treated as separate holiday flat, unit or house establishments.

DEFINITIONS

5 *Number of establishments.* For hotels, motels and guest houses, caravan parks and visitor hostels, the number of establishments within the scope of the survey which operated for any part of the survey period, or which closed temporarily for the quarter for seasonal reasons.

6 *Number of letting entities.* For holiday flats, units and houses, the number of owners, managers or real estate agents within the scope of the survey who operated for any part of the survey period.

7 Capacity in terms of *Guest rooms, Bed spaces, Holiday units* or *Caravan park sites, etc.* is the maximum number available to accommodate paying guests during the survey period. Capacity closed temporarily for seasonal reasons is included.

8 *Bed spaces.* Three-quarter beds are counted as one bed space; double beds as two bed spaces. Cots are excluded.

EXPLANATORY NOTES *continued*DEFINITIONS *continued*

9 *Total caravan park capacity* comprises *On-site vans*, *Other powered sites*, *Unpowered sites* and *Cabins*, etc.

10 *Room nights available*. The number of guest rooms available multiplied by the number of days for which they were available during the survey period. Includes operating periods only for establishments closing (other than for seasonal reasons) or opening during the survey period.

11 Occupancy in terms of *Room nights*, *Unit nights* or *Site nights occupied* refers to the total number of nights each guest room, holiday unit or caravan park site, etc. was occupied during the survey period.

NOTE: From September quarter 1992, caravan park sites, etc. permanently reserved for 2 months or more at the end of the survey period but only casually occupied by their tenants have been recorded continuously as *Site nights occupied* irrespective of whether the tenants of individual sites were in residence on any particular night. (See also paragraph 14 below). Previously, usage of these sites was recorded as *Site nights occupied* only when their tenants were in the park. Total site occupancy rates from September quarter 1992 are therefore not comparable with those from previous quarters.

12 Occupancy in terms of *Guest nights* refers to the total number of nights each paying guest stayed during the survey period.

13 *Sites occupied by long-term guests*. The total number of sites, etc. occupied at the end of the survey period by guests who have stayed continuously for 2 months or more.

14 *Other sites permanently reserved*. The total number of powered and unpowered sites, on-site vans and cabins, etc. continuously let for 2 months or more by the end of the survey period to tenants who occupy the sites only on a casual or sporadic basis. Separate data for this item are available only from September quarter 1992.

15 *Occupancy rates* represent occupancy expressed as a percentage of total capacity available during the survey period e.g.

$$\text{Room occupancy rate (\%)} \text{ for the period} = \frac{\text{Room nights occupied}}{(\text{Guest rooms}) \times (\text{No. of days in the period})} \times 100$$

providing that, for establishments closing (other than for seasonal reasons) or opening during the survey period, the denominator of the above expression includes only operating periods.

16 *Guest arrivals*. The total number of paying guests counted only on the first night they stayed at the accommodation establishment.

17 *Unit lettings*. The total number of times a holiday flat, unit or house was occupied by a new tenant, counted only on the first night it was occupied by the new tenant.

18 *Average length of stay* is expressed in number of days and calculated:

- for hotels, motels and guest houses and for visitor hostels, by dividing *Guest nights* by *Guest arrivals* and
- for holiday flats, units and houses, by dividing *Unit nights occupied* by *Unit lettings*.

19 *Takings from accommodation*. Revenue received from the provision of accommodation. Takings from meals are excluded. Takings from accommodation for each month generally represent the takings received during that month. Where payments are received in advance of, or after, the provision of accommodation to guests, the monthly figure for takings from accommodation may not necessarily bear a direct relationship to the number of guests accommodated during the month. Rental and storage fees paid to caravan parks for the keeping of private vans in parks are included in the takings of the month they are received.

EXPLANATORY NOTES—continued

DEFINITIONS --continued

20 *Star grading.* The grading of hotels and motels with facilities based on the classification system used by members of the Australian Automobile Association (AAA). The gradings are allocated according to a points system based on the amenities and facilities available to guests. Details of the grading scheme are contained in the RACV-RAASA members' publication *Accommodation Australia*, or the individual tour guides produced by members of the AAA. For the purpose of classifying establishments to a star grading in this publication, 'half' star gradings are ignored (e.g. a two and a half star grading has been shown as two star).

21 *Employment.* The number of persons working at accommodation establishments at the end of the survey period (including working proprietors and those working on other than accommodation activities).

UNPUBLISHED STATISTICS

22 The ABS may make available on request certain unpublished tourist accommodation statistics. A charge may be made for this information.

RELATED PUBLICATIONS

23 Publications for Australia, and each State and Territory, are released by the respective offices of the ABS. Tourist accommodation statistics for past quarters are available on request. Other ABS publications which may be of interest include:

Directory of Tourism Statistics (1130.0) (irregular; first and latest issue: 1991)

Overseas Arrivals and Departures, Australia (3401.0) (monthly)

Tourism Indicators Australia (8634.0) (quarterly)

Selected Accommodation Establishments, Australia, 1984-85 (8636.0) (irregular)

Tourist Accommodation Atlas of Queensland, 1991 (8645.3) (irregular)

24 Current publications produced by the ABS are listed in the *Catalogue of Publications and Products*, (1101.0). The ABS also issues the *Publications Advice* (1105.0) on Tuesdays and Fridays which lists publications to be released in the next few days. Both the *Catalogue* and *Publications Advice* are available from any ABS office.

SYMBOLS AND OTHER USAGES

n.a. not available
n.p. not available for publication but included in totals where applicable
r figure or series revised since previous issue
.. not applicable
— nil or rounded to zero

25 Where figures have been rounded, discrepancies may occur between totals and the sums of the component items.

ELECTRONIC SERVICES

DISCOVERY. The ABS intends discontinuing its statistical information service on DISCOVERY. Please contact Peter Davidson (Phone 06 252 6684) to discuss possible alternatives for acquiring statistics or if you wish to comment on this proposal.

PC-AUSSTATS. Thousands of up-to-date time series are available on this ABS on-line service. For further information, phone the PC-AUSSTATS Help Desk on (06) 252 6017.

TELESTATS. This service provides:

- foreign trade statistics tailored to users' requirements. Further information is available on (06) 252 5404
- text and tables for selected Main Economic Indicator publications. Further information is available on (06) 252 5405.

FLOPPY DISK SERVICE

Selected ABS statistics are available on floppy disk. Further information is available on (06) 252 6684.

RICHARD MADDEN
Acting Australian Statistician





For more information ...

The ABS publishes a wide range of statistics and other information on Australia's economic and social conditions. Details of what is available in various publications and other products can be found in the *ABS Catalogue of Publications and Products* available at all ABS Offices (see below for contact details).

Information Consultancy Service

Information tailored to special needs of clients can be obtained from the Information Consultancy Service available at ABS Offices (see Information Inquiries below for contact details).

National Dial-a-Statistic Line

0055 86 400

(Steadycom P/L: premium rate 25c/21.4 secs.)

This number gives 24-hour access, 365 days a year, for a range of statistics.

Electronic Data Services

A large range of data is available via on-line services, diskette, magnetic tape, tape cartridge and CD ROM. For more details about these electronic data services, contact any ABS Office (see below).

Bookshops and Subscriptions

There is a large number of ABS publications available from ABS bookshops (see below Bookshop Sales for contact details). The ABS also provides a subscription service through which nominated publications are supplied by mail on a regular basis (telephone Subscription Service toll free on 008 02 0608 Australia wide).

Sales and Inquiries

Regional Offices	Information Inquiries	Bookshop Sales
SYDNEY (02)	268 4611	268 4620
MELBOURNE (03)	615 7000	615 7829
BRISBANE (07)	222 6351	222 6350
PERTH (09)	360 5140	360 5307
ADELAIDE (08)	237 7100	237 7582
HOBART (002)	20 5800	20 5800
CANBERRA (06)	207 0326	207 0326
DARWIN (089)	43 2111	43 2111
National Office		
ACT (06)	252 6007	008 020 608

ABS Email Addresses

Keylink	STAT.INFO/ABS
X.400	(C:AU,A:TELMEMO,O:ABS,SN:INFO,FN:STAT)
Internet	STAT.INFO@ABS. TELEMEMO.AU



Information Services, ABS, PO Box 10, Belconnen ACT 2616

